

RECYCLED RUBBER Sport Mat Flooring



DINO FLEX GROUP LP

www.dinoflex.com

LEED LEADERSHIP IN ENERGY & ENVIRONMENTAL DESIGN

DINO FLEX recycled rubber products help qualify projects for LEED credits. Please refer to www.dinoflex.com for more info.



Cert# SCS-FS-02144

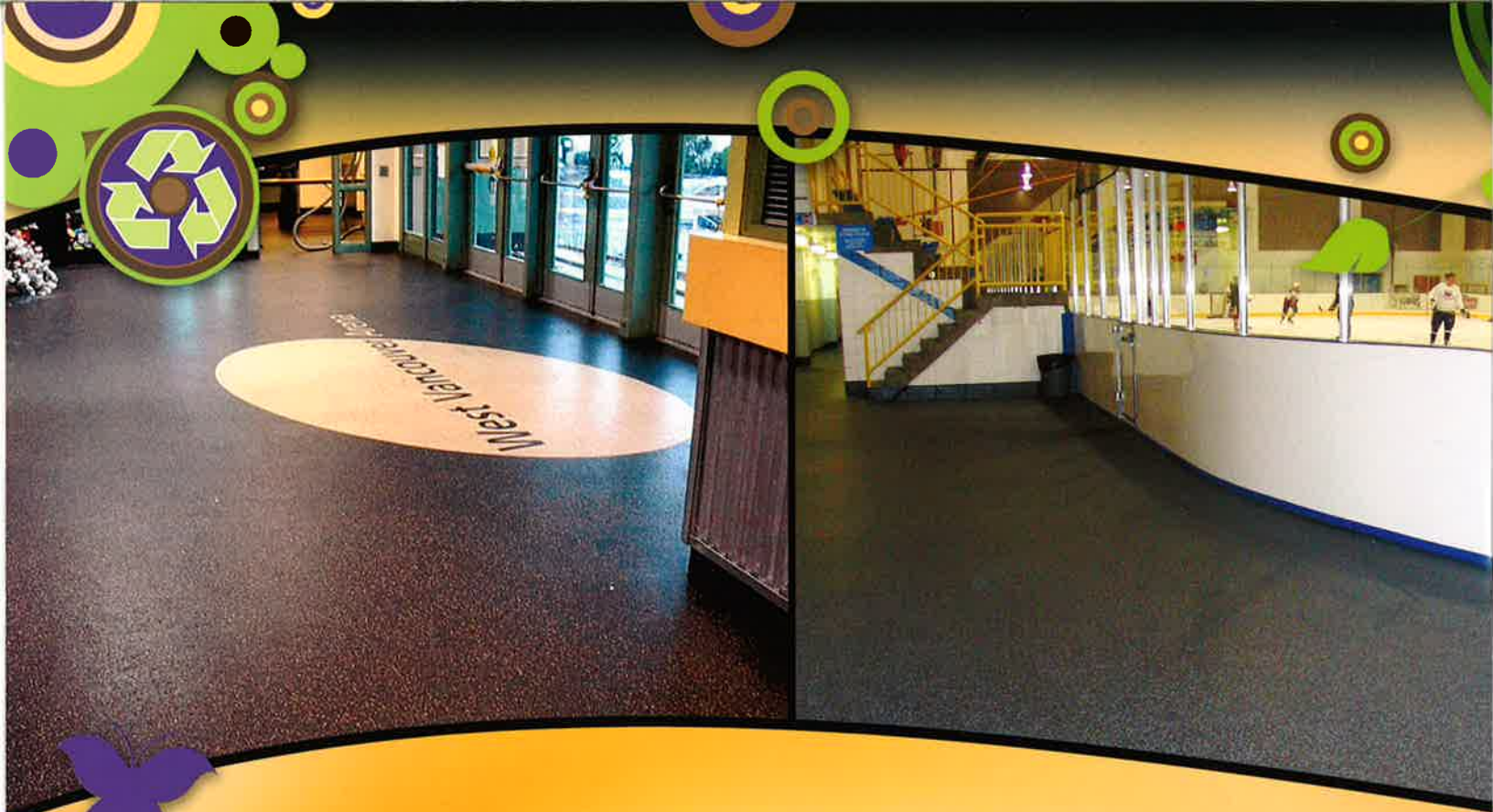


FEATURES AND **benefits**

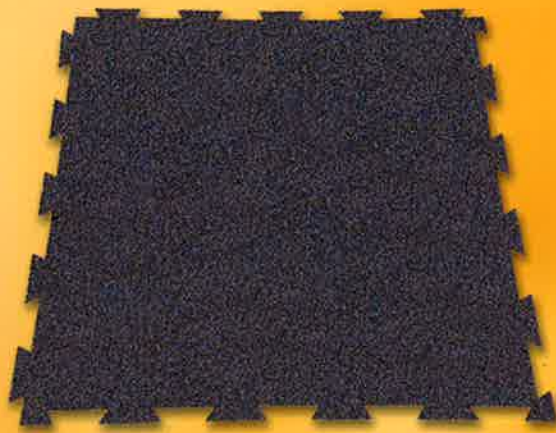
- durable
- slip resistant
- sound absorbing
- interlocking (adhesive not required)
- stain resistant
- shock absorbing
- low maintenance
- reduces muscle fatigue
- golf spike resistant
- skate blade resistant
- resistant to snow & ice
- color throughout
- removable, reversible, reusable

Square Cut Glued Down Flooring

Our high density, superior quality rubber tiles are perfect in areas subjected to high temperature and humidity variations. Adhering these precision cut tiles to the sub-floor provides dimensional stability and reduces cutting waste. Depending on thickness, each rubber tile weighs between 10 and 36 pounds which means that one person can easily carry and lay out the flooring.

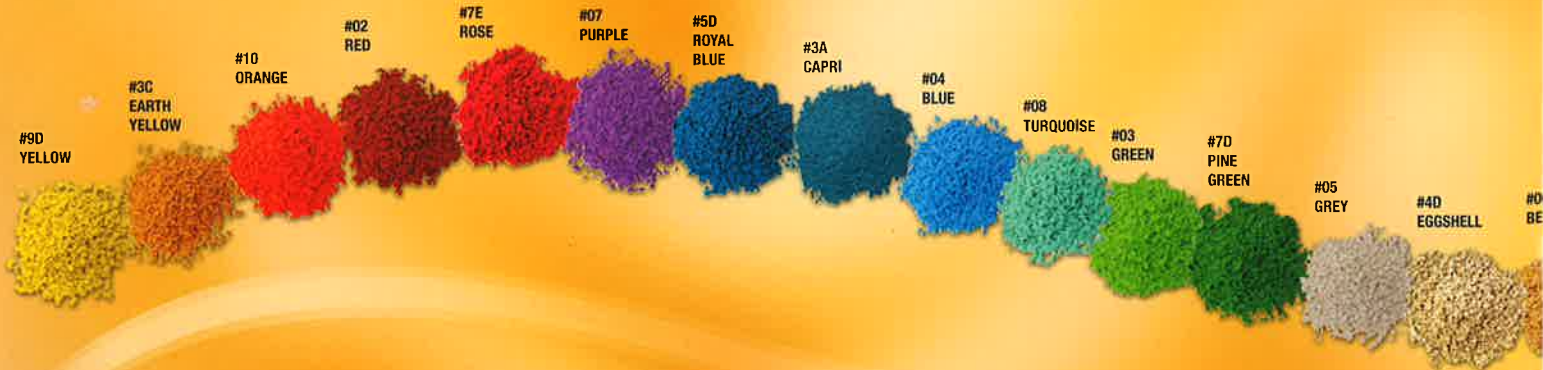


Flooring



Interlocking System “Loose Lay” Flooring

Our in-house water jet creates precision cut interlocking tiles resulting in a unified, seamless look. Installation costs are reduced because adhesives are not required. DINO FLEX interlocking tiles are reversible, doubling the life expectancy of your floor.



g that lasts.



custom logos

AND MESSAGES

Using our water jet technology, you are able to design a rubber floor that is both functional and appealing. Use valuable floor space to display your logo or brand repeatedly throughout your facility, write a message to your customers in a strategic location, create play or learning areas for children, clearly mark exits, or draw attention to merchandise. Contact DINO FLEX for a free estimate.



#01
BLACK

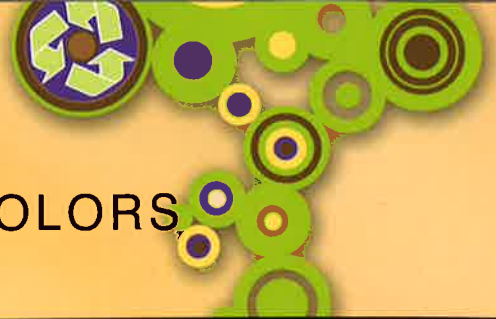
#11
BROWN

GE



choices

DINOFLEX COLORS

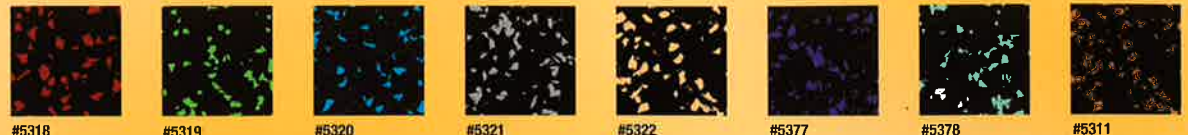


standard colors

10%
color intensity



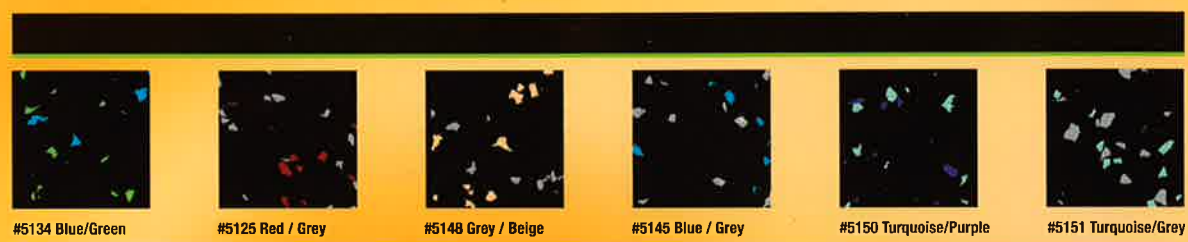
30%
color intensity



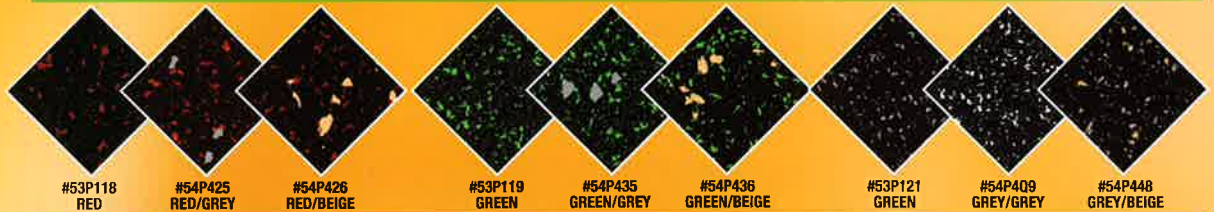
50%
color intensity



two-color colors



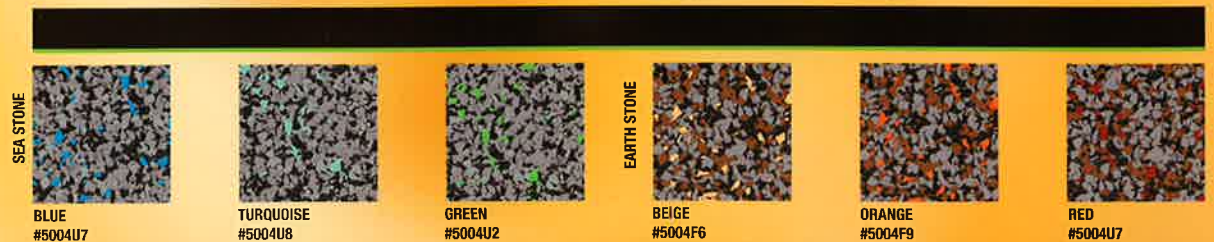
granite flex



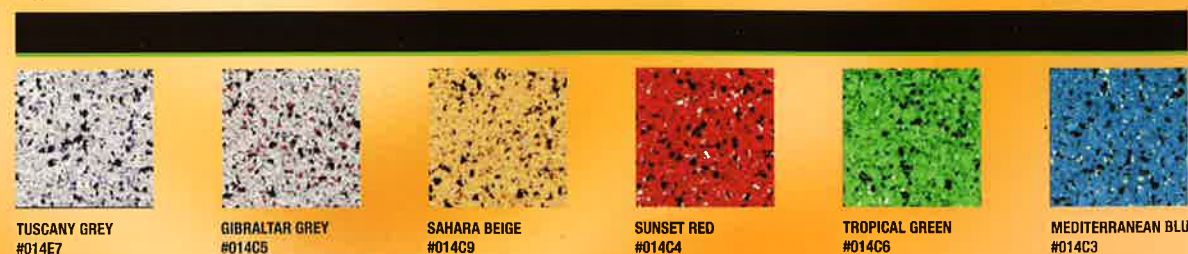
décor line



stone line



elite line



PHYSICAL PROPERTIES

TEST	DESCRIPTION	STANDARD COLORS	STONE LINE	ELITE LINE
ASTM C501	Taber Abrasion (H-22)	0.8% wt. Loss		4.0% wt. Loss
ASTM D2047	Static Coefficient of Friction	Dry 1.04, Wet 1.05	Dry 0.81, Wet 0.90	Dry 0.85, Wet 1.01
ASTM D2240	Shore A Hardness	64	62	59
ASTM D3676	Density Foam Test	66.0 lbs/cu. ft.	77.7 lbs/cu. ft.	78.3 lbs/cu. ft.
ASTM D395B	Compression Test	96.3% Recovered	95.3% Recovered	94.7% Recovered
ASTM D412	Tensile Strength	290.2 lbs/sq. in.	292.2 lbs /sq. in.	186.1 lbs/sq. in.
ASTM D5116	VOC Emissions	Pass	Pass	Pass
ASTM F137	Flexibility	6mm Mandrel PASSES		6mm Mandrel PASSES
ASTM F150 (NFPA 99)	Electrical Resistance: • Surface to surface • Surface to ground	10 ¹⁰ ohms (average) 10 ¹⁰ ohms (average)	10 ¹¹ ohms (average) 10 ¹¹ ohms (average)	10 ¹¹ ohms (average) 10 ¹¹ ohms (average)
ASTM F1914	Residual Indentation	.007 inch (1.7%) Loss		
ASTM F970	Static Load	125 lb/in ² < .000in	1000 lb/in ² < .030in	1000 lb/in ² < .042in
ASTM F925	Chemical Resistance	No Change	No Change	
ASTM E492	Impact Sound Transmission	8 mm - IIC 59	8mm - IIC 59	8mm - IIC 59
AATTC 13406	Electrostatic Propensity	POS 1.6KV		
ASTM G21	Mildew Resistance	No Mildew after 14 Days	No Mildew after 28 days	No Mildew after 28 days

California 01350 (CHPS Compliant for VOC Emissions). Emission tests are performed following California Dept. of Health Services Standard Practice for the Testing of Volatile Organic Emissions from various sources using small-scale environmental chambers.

PRODUCT SPECIFICATIONS

PRODUCT	SIZE	STANDARD THICKNESS	TYPICAL INSTALLATIONS
Sport Mat Interlock (loose lay)	37" x 37" = 9.5 ft ² 94cm x 94cm - 0.88m ²	5/16", 3/8", 1/2" 8mm, 10mm, 12mm Tolerance of + 0.5 mm	Fitness Centers - cardio & pilates areas, free weights, locker rooms, spinning rooms, offices, pro shops.
Sport Mat Square Cut (glue down)	38" x 38" = 10.0 ft ² 96.5cm x 96.5cm - 0.93m ²	5/32", 1/4", 5/16", 3/8", 1/2" 4 mm, 6 mm, 8mm, 10mm, 12mm Tolerance of + 0.5 mm	Ice Arenas, Ski Resorts & Golf Courses - lobbies, pro shops, stairs, wall protection, cafeterias, rental shops, locker rooms, corridors, and washrooms.

10 YEAR WARRANTY

Note: All measurements are subject to nominal variation. For complete specifications and technical data, please visit our website at www.dinoflex.com



DINOFLEX GROUP LP



RECYCLED RUBBER SURFACING

P.O. Box 3309
5590 - 46th Avenue S.E.
Salmon Arm, B.C.
V1E 4S1 CANADA

TEL (250) 832-7780
FAX (250) 832-7788
TOLL FREE 1-877-713-1899
EMAIL info@dinoflex.com

www.dinoflex.com

REPRESENTED BY:

